

SpecBuilder

Accelerate authoring, testing and publishing transaction specifications for any ecosystem including finance, retail, manufacturing, logistics, etc.

The Data Exchange Challenge

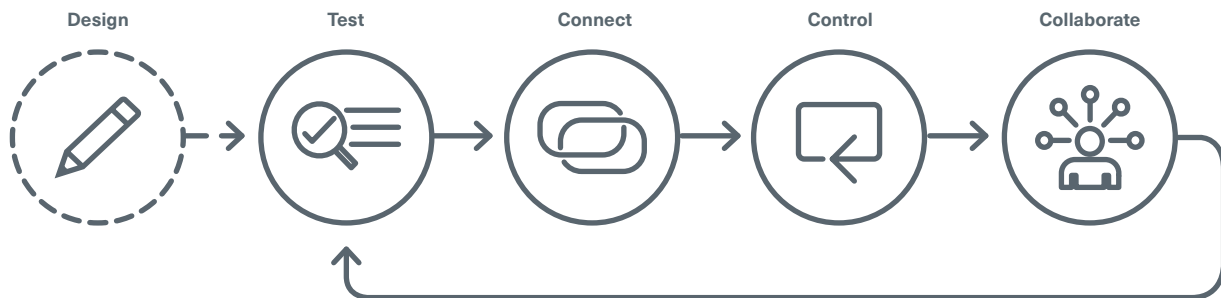
Data is the lifeline of every organization; it offers value and new opportunities, but also carries risks. How we collect, validate and process growing amounts of data is driving many digital modernization initiatives.

The consequences of poorly designed specifications are severe, requiring expert resources and significant time to resolve. Poorly defined processing guidelines undermine the trust that is essential to the high-volume, automated exchange of information and increase costs and risk for the organization.

Building accurate and precise data connections that enforce business policy and protect mission critical systems from failure, require a professional grade toolkit.

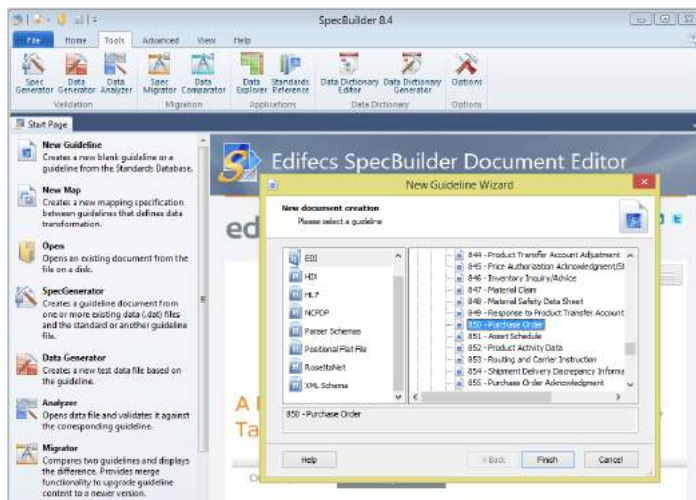
Requirements to meet the data challenge:

- Simplify the process of building specs and contracts
- Support required data formats and business rules
- Reduce overall cost and development times
- Easily test/integrate modern apps and SaaS tools
- Perform ad-hoc analytics and quickly share results



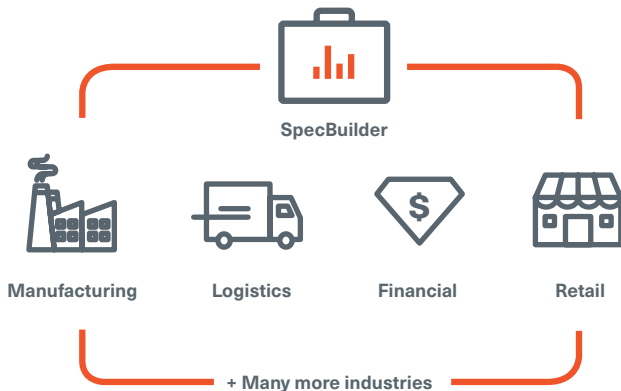
The Edifecs Solution

Edifecs SpecBuilder is an integrated and easy-to-use design-time toolkit that simplifies and accelerates authoring, testing and publishing specifications, and processing maps for all types of transaction processing. The toolkit helps companies more efficiently exchange business data such as purchase orders, invoices, shipment notices, agreement terms, payment files, merchandise data and many other data types.



Why technology professionals choose SpecBuilder:

- Design tool packed with 20 years of data exchange experience
- Industry-leading functionality with point and click processing
- Simple method to define trade specifications and process maps
- A library of more than 30,000 pre-built trade specifications (X12, EDIFACT, NCPDP, Telecom, XML, Positional and CSV)
- Stay up to date on standards and compliance requirements
- Maximize staff efficiency at design-time, reduced run-time errors
- Automate testing for compliance using internal and partner data files
- Quickly understand the impact of change with data analytics
- Integrate specs from third party vendors like SAP, Salesforce, and Biztalk
- Perform ad-hoc analytics on large volumes of EDI data
- Integrate new message formats like XML, JSON and Web Services



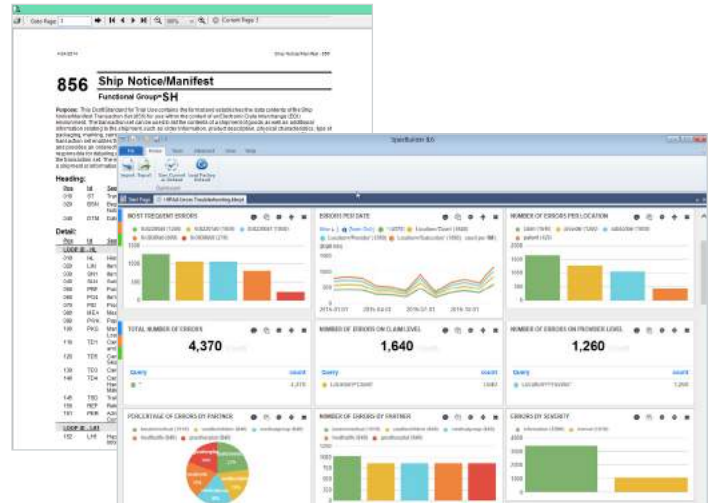
SpecBuilder is the first choice for integrators and technology professionals working in finance, retail, transportation, and logistics.

Key Benefits and Capabilities

Edifecs provides the best practice approach to rules of trading partner engagement. SpecBuilder offers a rich feature set that help organizations demystify top EDI challenges, meet industry mandates, improve the transaction quality, and streamline guidelines rollouts.

1. Reduce Implementation Time

- Quickly develop spec guidelines from databases or project repositories using an intuitive design editor or reverse engineer specs from data files (Flat file or XML)
- Jump start projects with 30,000 pre-built templates; Build route maps using standard formats (X12, NCPDP), proprietary formats (positional, Telecom, CSV, XML) or batch files
- Support messaging formats such as XML, JSON in conjunction with Web Services and REST APIs to integrate with other modern applications and SaaS tools (such as Salesforce, Oracle CRMs, SAP, and Microsoft)
- Streamline management by performing gap analysis between different versions of guidelines, mapping between multiple standards and formats, and migrating guidelines between different versions
- Store transaction information and generate outbound transactions from databases using database adapters



2. Improve Quality and Compliance

- Calculate the business impact of changes using Business Impact Visualizer reports to identify abnormal processing patterns, scorecard and report statistics on complex, high volume scenarios
- Apply data governance for accuracy by creating and maintaining code correlation tables, applying codeset crosswalks and enhancing data through database lookups and external routines
- Isolate differences in data files and specification then share error reports in many format (HTML, RTF, PDF and XML)
- Leverage Edifecs monthly service to update code sets and standards to assure compliance and identify root cause of issues related to data conformance or partner submissions

In one toolkit, SpecBuilder delivers a comprehensive set of capabilities to accelerate transaction specification development, simplify integration, and enhance operational efficiency.

3. Reduce Administrative Costs

- Use visual tools to define custom business rules and processing logic to ensure data formats and values meet business needs, including error handling
- Point-and-click capabilities include: data comparison, test data generation, data analysis, and visual mapping
- Perform ad-hoc analytics on large volumes of EDI data like purchase orders, shipments, warehouse management and other documents with a built-in visualizer tool
- Gain ad-hoc business insights directly from transaction data without expensive ETL and data warehouse tools
- Create and customize test data from production data by specifying seed values in dictionaries
- Quickly understand the impact of new versions of regulatory changes, codeset variations, and gateway modernization (migrating between gateway engines or clearinghouses)

4. Improve Trading Partner Relations

- Store and manage related artifacts such as guidelines, maps and data files, in a common project repository; Share user notes and comments about specifications to facilitate knowledge exchange and consistency
- Test partner data files against guidelines and provide meaningful error analysis for quick problem resolution
- Plan and arrange your supply chain with buyers and suppliers and better serve different geographic areas; De-identify data when sharing with partners



Edifecs Inc. is a global healthcare software company committed to improving outcomes, reducing costs, and elevating value of healthcare for everyone. Edifecs delivers the industry's premier IT partnership platform to providers, insurers, pharmacy benefit management companies, and other trading partners. By mobilizing its leading solutions at the front end of the healthcare information pipeline, Edifecs provides a unified platform for partners to flexibly pilot and scale new initiatives using their existing enterprise system. Since 1996, hundreds of healthcare customers have relied on Edifecs partnership solutions to future-proof their leading initiatives in the midst of a dynamic healthcare landscape. Edifecs is based in Bellevue, WA, with operations internationally. Learn more about us at edifecs.com.