

# 5 THINGS YOU SHOULD KNOW ABOUT HEALTH PLAN MEMBER ENROLLMENT

(but may not have known to ask!)



## DID YOU KNOW?



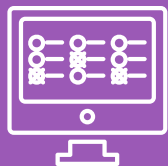
**1. Disjointed enrollment operations can cause health plans to lose their competitive advantage?**

**2. The growth plans of many payers are hindered by using multiple, often redundant, enrollment systems?**



**3. Legacy, outdated enrollment systems can increase friction and cause delays, damaging a plan's relationship with their members, leading to increased churn?**

**4. It is common for plans to lack full enrollment lifecycle visibility and self-service tools making it more difficult for individuals Brokers, and employer groups to do business with them?**



**5. The TCO of maintaining multiple, outdated enrollment systems (the "status quo" approach), which often sit within hard to maintain systems, typically far exceeds the investment of modernizing and consolidating enrollment technology and operations?**

Edifecs can help your plan modernize enrollment operations and avoid the pitfalls so many other payers fall into.

→ **CONTACT US TO START THE CONVERSATION!**